

# Art ep!H

CATALOGUE 2022





## CONTENTS

---

ABOUT US  
LATEST RELEASES  
TILED RUGS  
LASERED RUGS  
ALTA BY ART HIDE  
CLASSIC COLLECTION  
METALLIC HIDES  
FURNITURE  
CUSHIONS  
PRICE LIST  
CONTACT



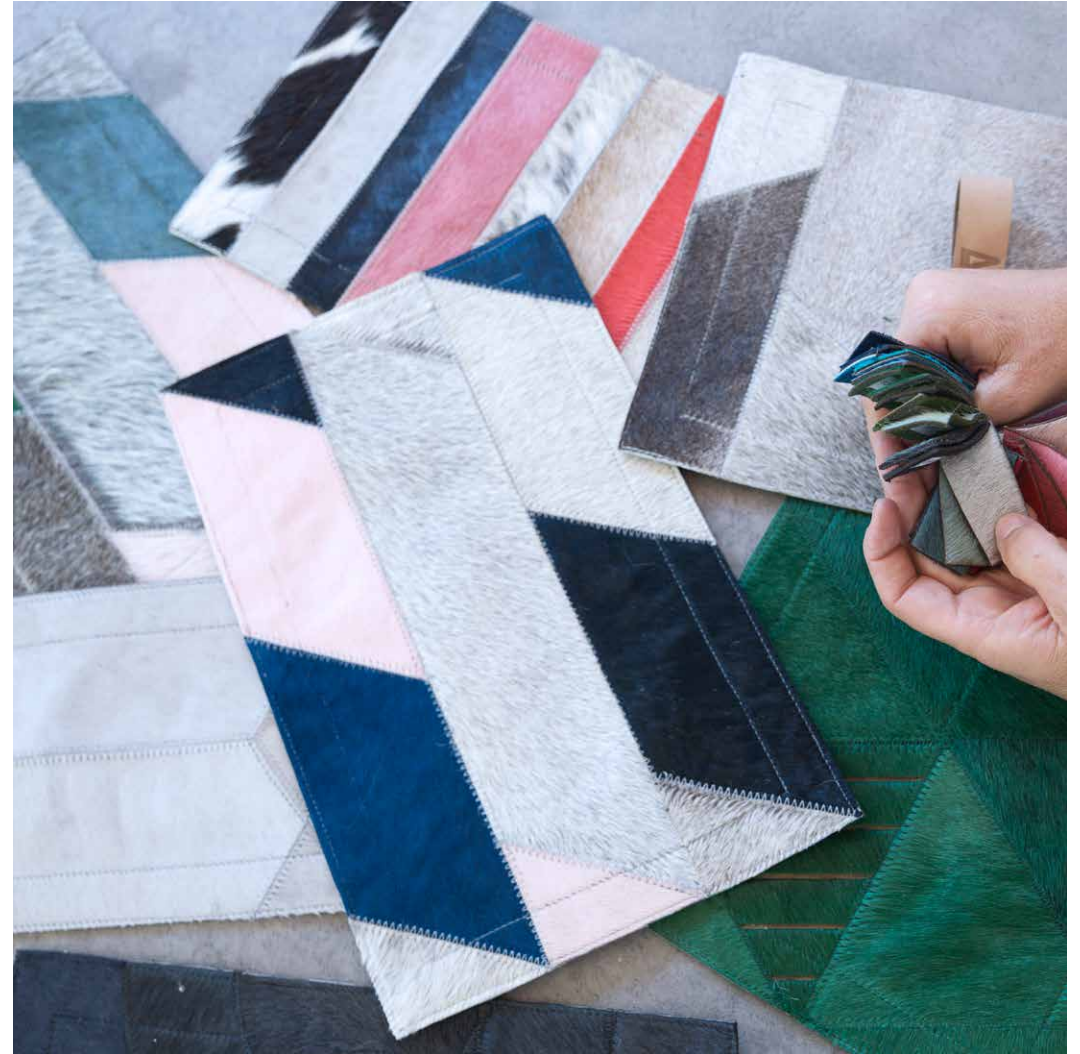
## ABOUT ART HIDE

---

Classic yet original; traditional yet progressive, Art Hide creates originally designed and ethically sourced leather products of an heirloom quality.

The company was formed by Australian sisters, Kura Perkins and Bree Hay-Hendry in 2009. Entrepreneur and former PR executive Kura's travels in South America inspired the Art Hide vision and Bree's skills as a textile and fashion designer brought the concept to life. The duo's expertise, combined with the traditional skills of their meticulous leather-craft team and an array of cutting edge technologies, have created timeless everyday masterpieces for hundreds of clients.

Art Hide's premium quality cowhide is sourced as a by-product of the meat industry from regulated tanneries, where methods involved in tanning and dyeing are always safe for workers and are non pollutant.



**GLOBAL WEBSTORE - ARTHIDE.CO**

**DIGITAL SHOWROOM - AHGCSHOWROOM.COM.AU**

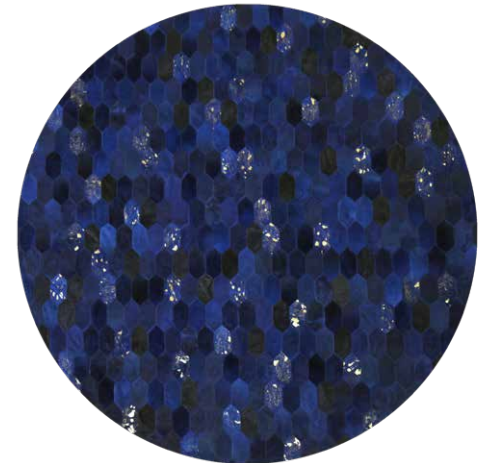






## HORNET RUG - MOSS & BLUE

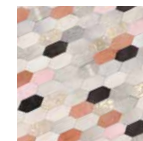
Art Hide's best selling Hornet now has two beautiful new colours - Moss and Blue. The retro, science fiction inspired Hornet features bold pops of vibrant colour with luxe gold detailing. Playful yet evocative, the Hornet takes its cues from the rich colours of the desert and fun poolside style.



Available in Circular, Rectangle, Runner & all Custom sizes.  
For pricing, please see our Price List at the end of the catalogue.



TEAL



DESERT

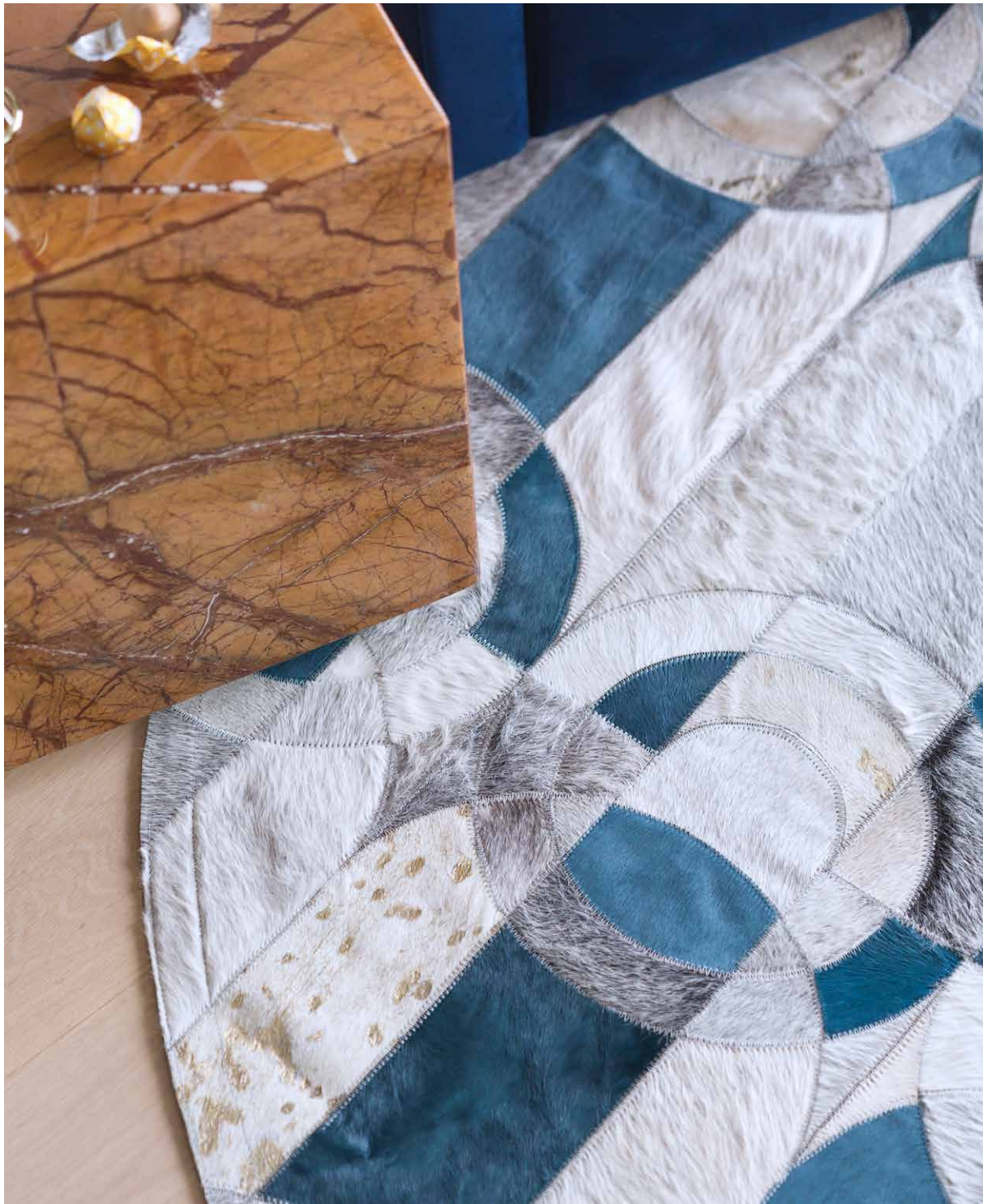


MOSS



BLUE



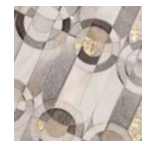


## CURVO RUG - JADE

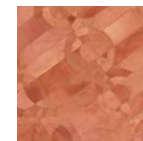
Art Hide's Curvo style has been a customer favourite since its release in 2020. With bold geometric lines and a striking mid-century aesthetic, the 2021 new Jade Curvo will not disappoint. Featuring irregular sections of light and dark jade on a base of tonally varying natural grey hide, finished with glittering gold to elevate the natural beauty of this unique rug.



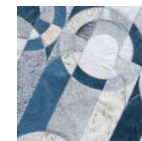
Available in Circular, Rectangle, Runner & all Custom sizes.  
For pricing, please see our Price List at the end of the catalogue.



GREY/GOLD



SHRIMP



JADE





## MOSAICA - LILAC ASH

Art Hide's elegant Mosaica rug now has a second beautiful colourway called Lilac Ash. The Mosaica features a classic symmetrical parquetry tile in a stunning muted dyed grey, reminiscent of the early morning sky. It's created with tonal contrasting gold to capture the eye and elevate this beautiful, refined and luxurious design.



Available in Circular, Rectangle, Runner & all Custom sizes.  
For pricing, please see our Price List at the end of the catalogue.



FOG



LILAC ASH





ANGULO RECTANGULAR RUG - BLUE



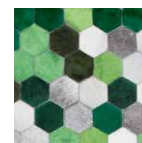


## ANGULO RUG RECTANGULAR

Transform your interiors from the floor up with one of Art Hide's best sellers. With tonal greys, the Angulo's seasonal colour updates fit well in both neutral and vibrant interiors, while taking your breath away every time you see it!



Available in Circular, Rectangle, Hexagon, Runner & all Custom sizes.  
For pricing, please see our Price List at the end of the catalogue.



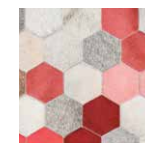
GREEN



BLUE



GREY



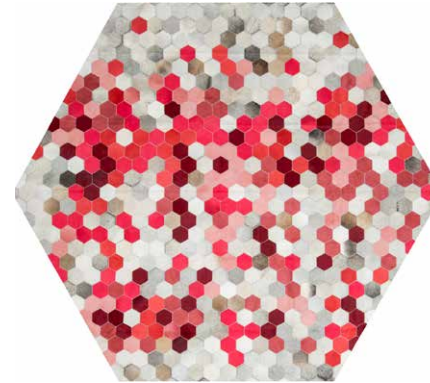
PINK



CREAM



## ANGULO RUG HEXAGON



Available in Circular, Rectangle, Hexagon, Runner & all Custom sizes.  
For pricing, please see our Price List at the end of the catalogue.



GREEN



BLUE



GREY



PINK



CREAM





ANGULO RECTANGULAR RUG - GREEN





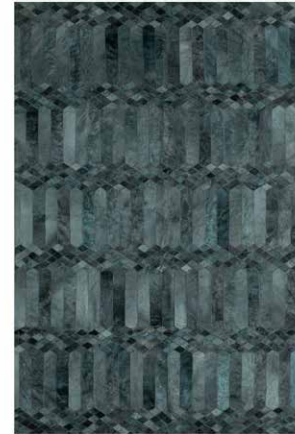
LARGO RUG - QUARRY





## LARGO RUG

Offering a fresh take on 70s opulence, the pattern of Art Hide's Largo rug is inspired by bold wallpaper prints of the time in stunning new tones. Teal is such an incredible floor rug colour – somewhat understated but yet an incredible piece of art on the floor in its own right, to be enjoyed and admired forever.



Available in Circular, Rectangle, Runner & all Custom sizes.  
For pricing, please see our Price List at the end of the catalogue.



TEAL



QUARRY



COGNAC

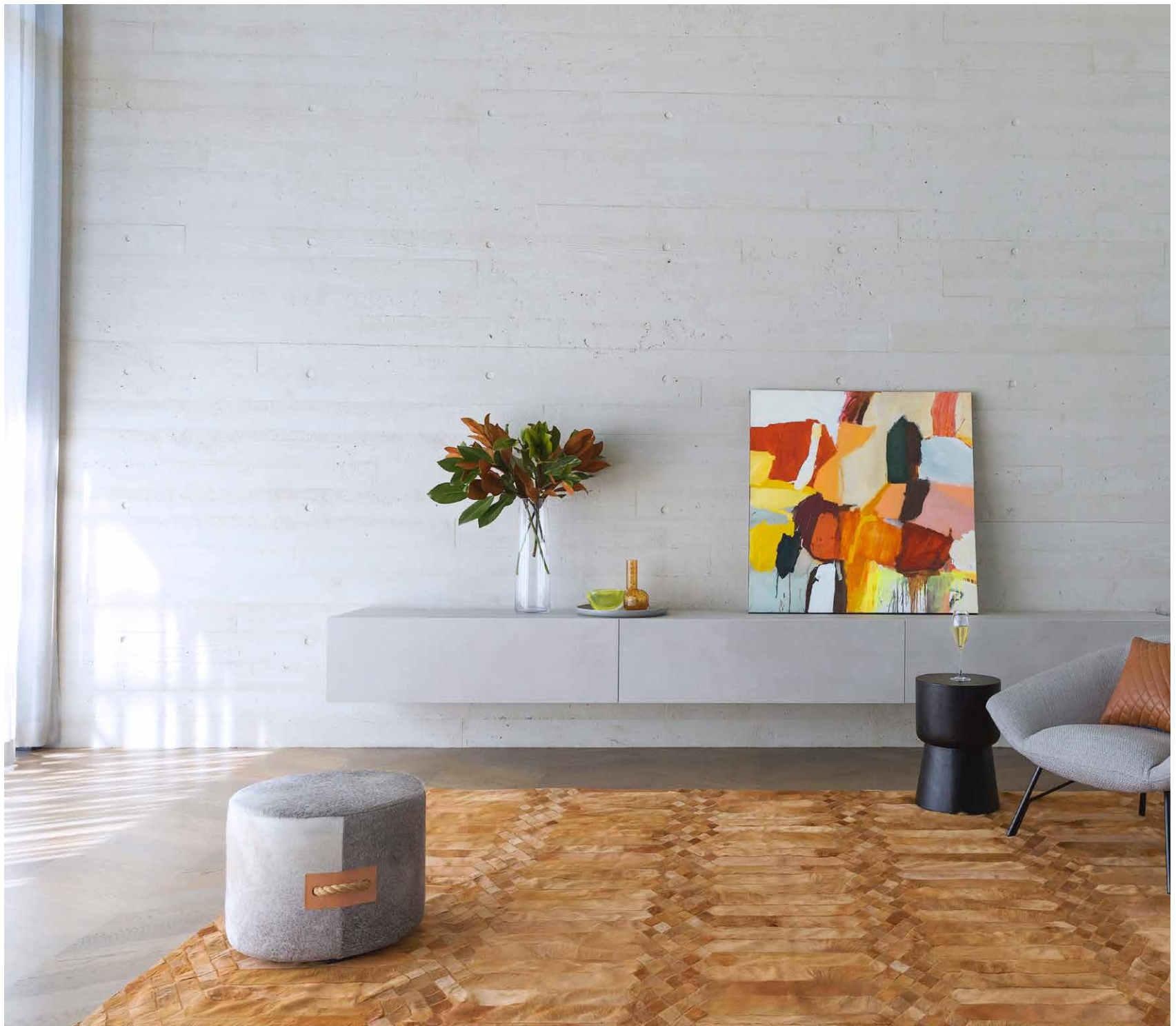


PINK

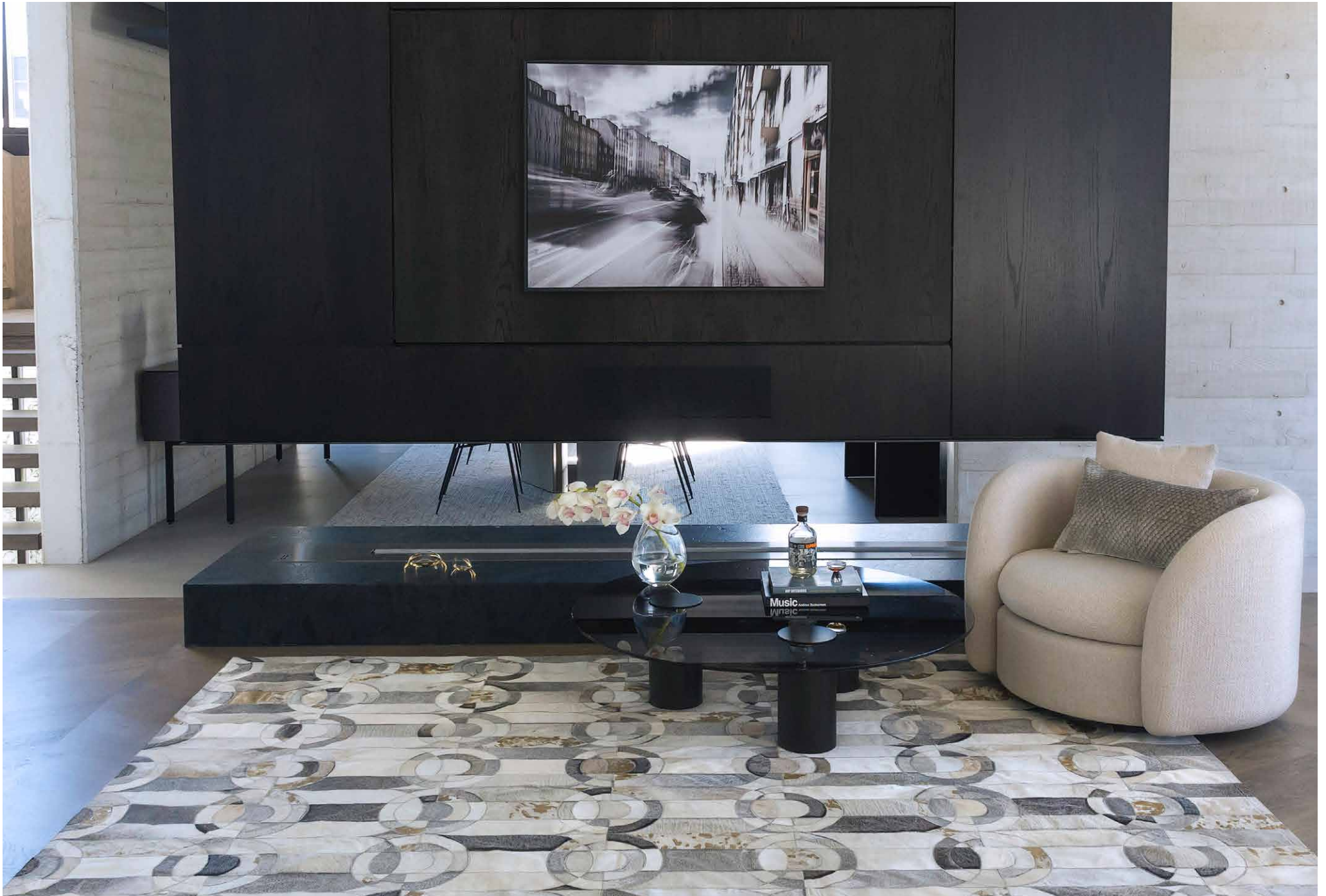


NATURAL GREY









CURVO - GREY & GOLD



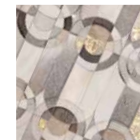


## CURVO RUG

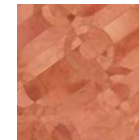
With dramatic geometry and bold shapes, the decadent Curvo evokes old-school mid century glamour. Chic gold accents are inspired by the glamorous heyday of vintage Palm Springs and instantly elevate the design.



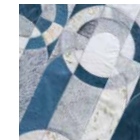
Available in Circular, Rectangle, Runner & all Custom sizes.  
For pricing, please see our Price List at the end of the catalogue.



GREY/GOLD

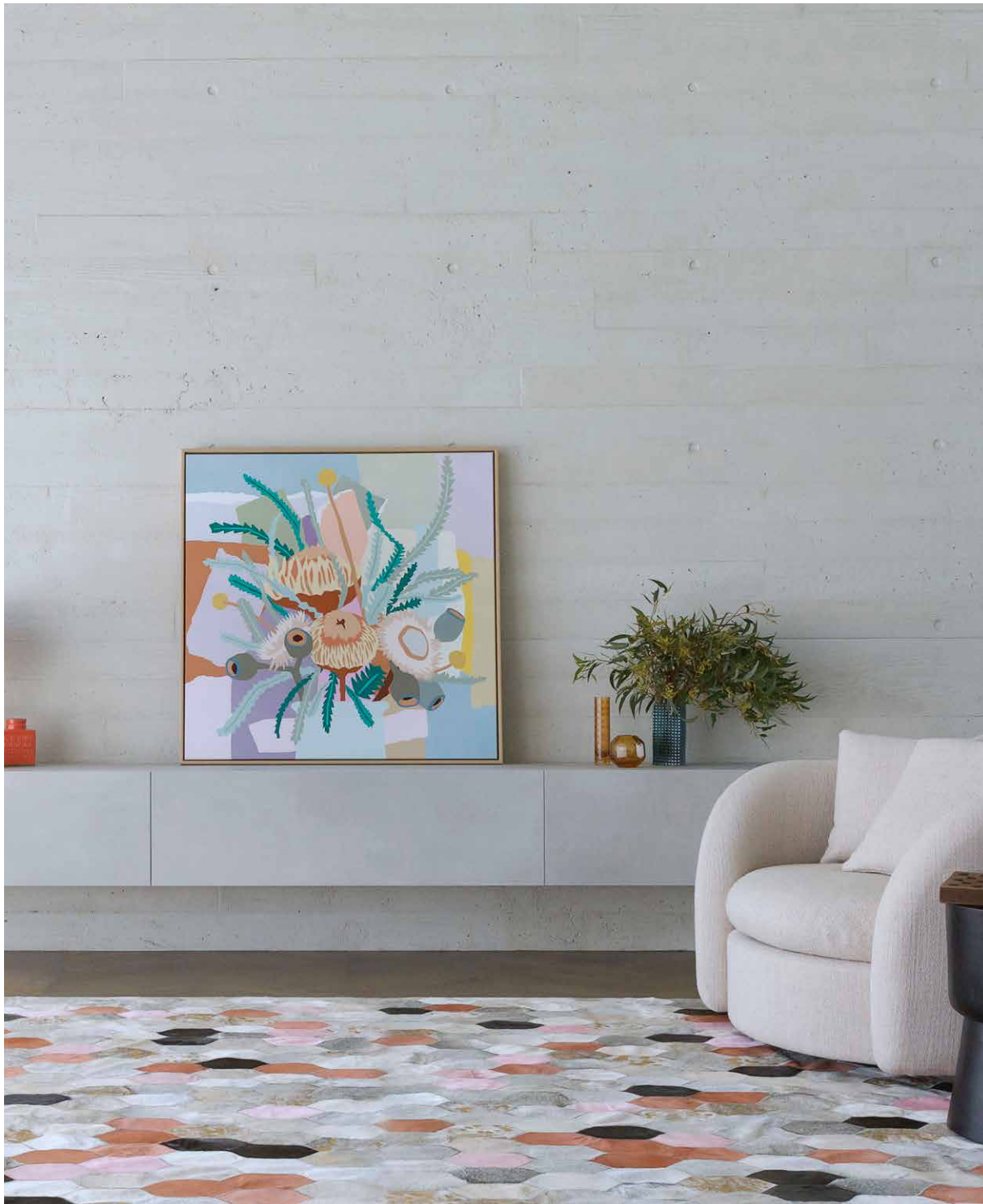


SHRIMP



JADE





## HORNET RUG

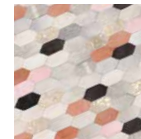
The retro, science fiction inspired Hornet features bold pops of vibrant colour with luxe gold detailing. Playful yet evocative, the Hornet takes its cues from the rich colours of the desert and fun poolside style.



Available in Circular, Rectangle, Runner & all Custom sizes.  
For pricing, please see our Price List at the end of the catalogue.



TEAL



DESERT



MOSS



BLUE







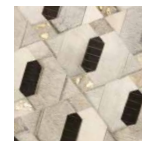


## LINAJE RUG - GREY

The Tribal inspired Linaje merge mid-century inspired gold accents with simple yet compelling geometric shapes and clean lines. The result is a bold statement rug evoking nostalgic glamour and an iconic Mad Men aesthetic.

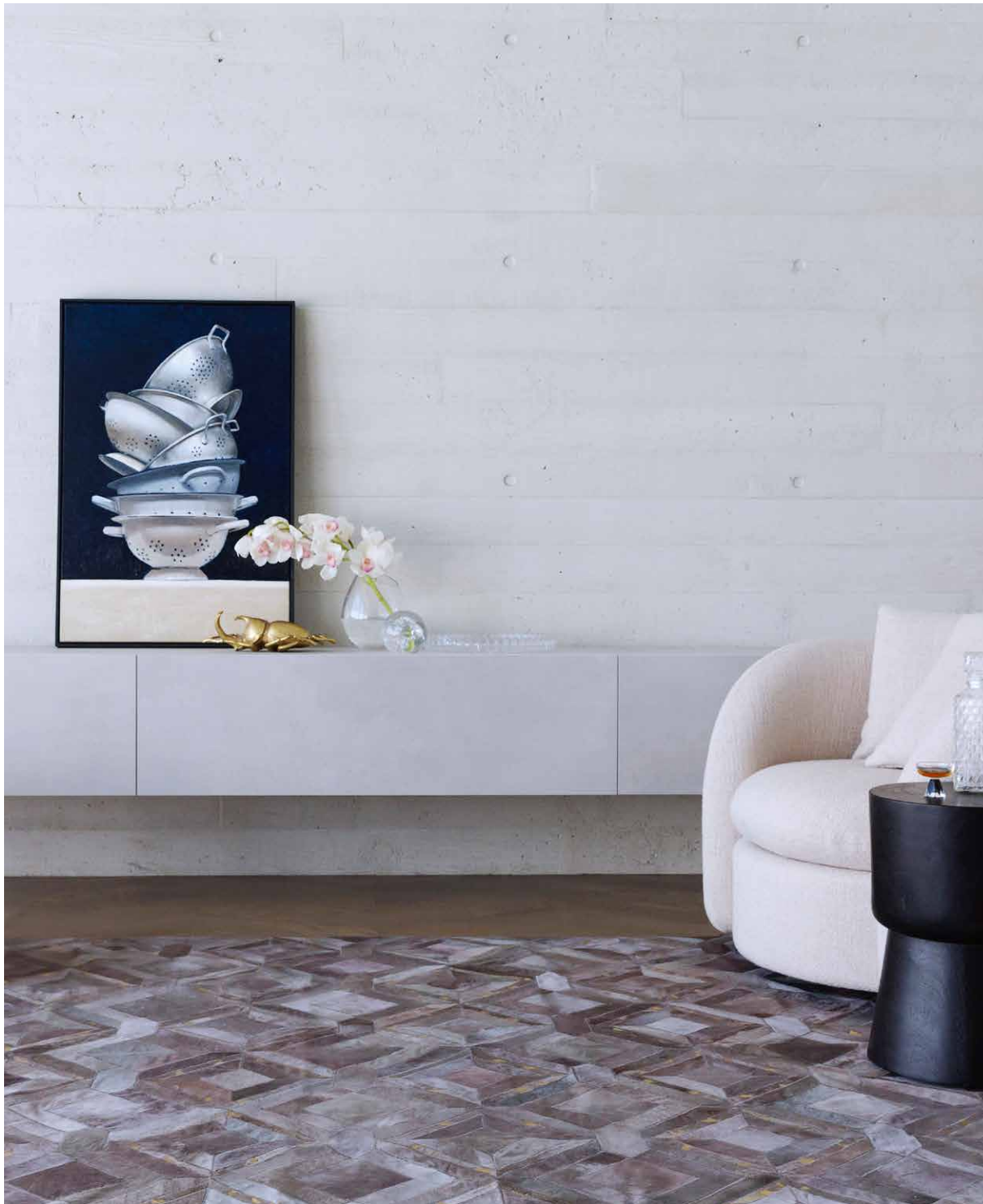


Available in Circular, Rectangle, Runner & all Custom sizes.  
For pricing, please see our Price List at the end of the catalogue.



GREY/GOLD





## MOSAICA

The Mosaica features a classic symmetrical parquetry tile in a stunning muted dyed grey, reminiscent of the early morning sky. It's created with tonal contrasting gold to capture the eye and elevate this beautiful, refined and luxurious design.



Available in Circular, Rectangle, Runner & all Custom sizes.  
For pricing, please see our Price List at the end of the catalogue.



FOG



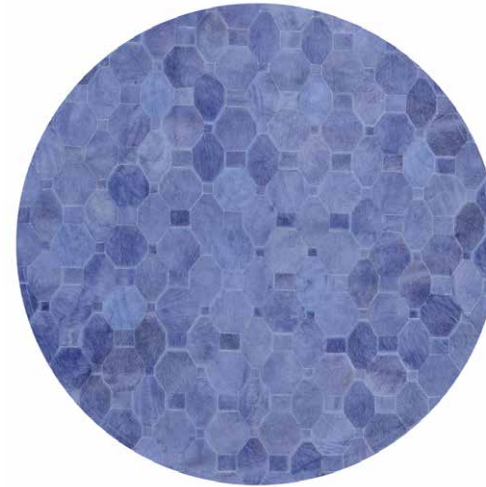
LILAC ASH





## OLEADA RUG

The Oleada is a striking yet free flowing, soft geometric pattern, creating a laid back elegance. Our new lab dipped muted colours for this style inspired by desert succulents and shimmering pools.



Available in Circular, Oval, Rectangle, Runner & all Custom sizes.  
For pricing, please see our Price List at the end of the catalogue.



PERIWINKLE



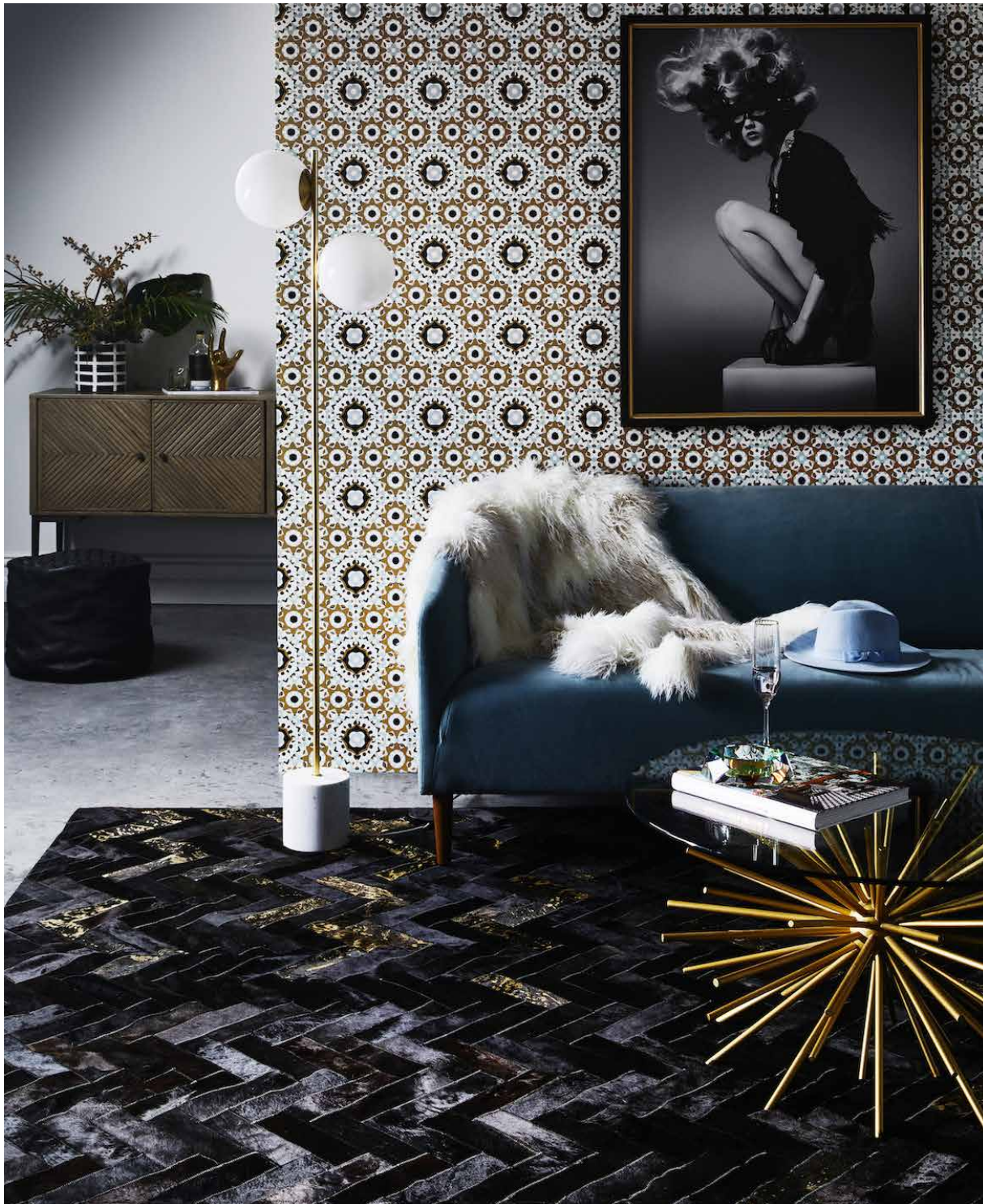
MOSS





OLEADA - MOSS



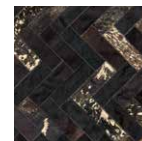


## ESTRELLA RUG

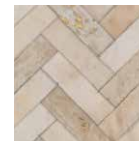
Your lounge room just got a helluva lot more glam with the entrance of this 70s glam rock-inspired classic, in herringbone combined with lots of gold! Let's face it, The 70s had it all and this stunning rug will make your space effortlessly ah-mazing.



Available in Circular, Rectangle, Runner & all Custom sizes.  
For pricing, please see our Price List at the end of the catalogue.

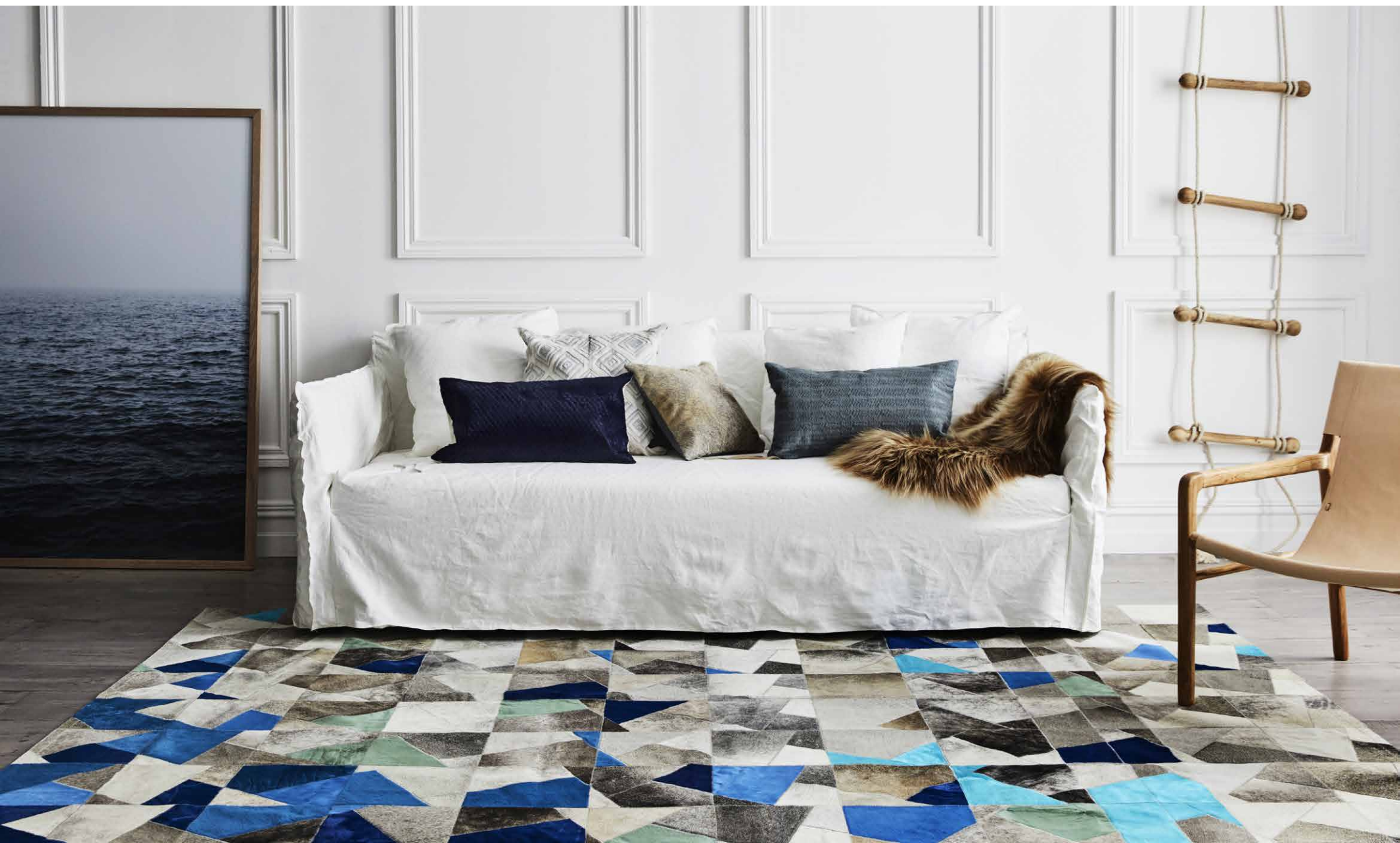


BLACK/GOLD



CREAM/GOLD





FACETA RUG - BLUE



## FACETA RUG

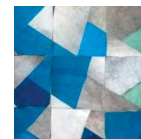
The luxurious Faceta is a sumptuous, elevated statement piece. With its fragmented proportions and tonal, unexpected, irregular shapes, this is covetable style defined.



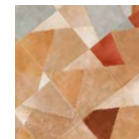
Available in Circular, Rectangle, Runner & all Custom sizes.  
For pricing, please see our Price List at the end of the catalogue.



GREY



BLUE



CARAMEL





FACETA RUG - GREY





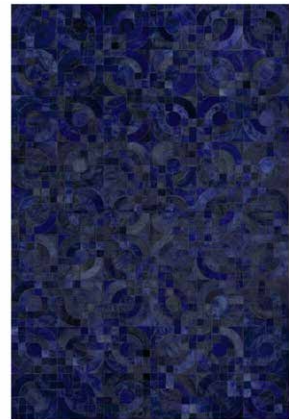
OPTICO RUG - FORREST GREEN





## OPTICO RUG

Immerse yourself in relaxed opulence and evoke classic glamour with the stunning new Optico from Art Hide. Think Mad Men Art Deco meets 70s iconic rock star glam, and you've nailed it. Inspired by wallpaper of the era, curved and hard edges make up this incredible design in rich tones that will provide endless inspiration for your interior style.



Available in Circular, Rectangle, Runner & all Custom sizes.  
For pricing, please see our Price List at the end of the catalogue.



FORREST GREEN

CHARCOAL

MIDNIGHT BLUE



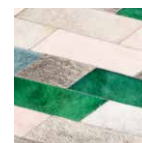


## ASTILA RUG

With a touch of timeless retro glam, Art Hide's Astila skilfully combines luscious natural cowhide tones of natural grey with dyed greys and a bold combined colour palette. It's long lines extend the eye and beautiful patchworked tones will inspire the rest of your interiors, with many stunning hues to accent with.



Available in Circular, Rectangle, Runner & all Custom sizes.  
For pricing, please see our Price List at the end of the catalogue.



TEAL/EMERALD



PINK/BLUE





NUEVA RAYA RECTANGULAR RUG - PEACH





NUEVA RAYA RECTANGULAR RUG - BLUE

## NUEVA RAYA RECTANGULAR RUG

Part laid back and part packing a punch, define your ultimate style with the charismatic Nueva Raya. This stunning rug offers your space a whole lot of personality with natural cowhide patterns and colours teemed with tonal colour palettes.



Available in Circular, Rectangle, Runner & all Custom sizes.  
For pricing, please see our Price List at the end of the catalogue.



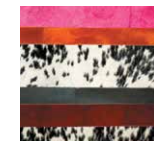
PEACH



BLUE



VERDE



PINK





NUEVA RAYA RECTANGULAR RUG - VERDE

# NUEVA RAYA CIRCULAR



Available in Circular, Rectangle, Runner & all Custom sizes.  
 For pricing, please see our Price List at the end of the catalogue.



PEACH



BLUE



VERDE



PINK





LA QUINTA RUG - PINK





LA QUINTA RUG - GREY

## LA QUINTA RUG

Symmetrical, minimal, classical...this sublime rug ticks all the boxes. Its stunning luxuriousness will radiate interiors joy every day. La Quinta is available in three standard circular sizes and created from premium quality cowhide leather, sourced as a by-product.

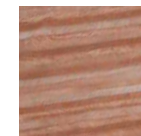


Available in Circular, Rectangle & Custom sizes.

For pricing, please see our Price List at the end of the catalogue.



PINK



CARAMEL



GREY



AMETHYST



NATURAL GREY





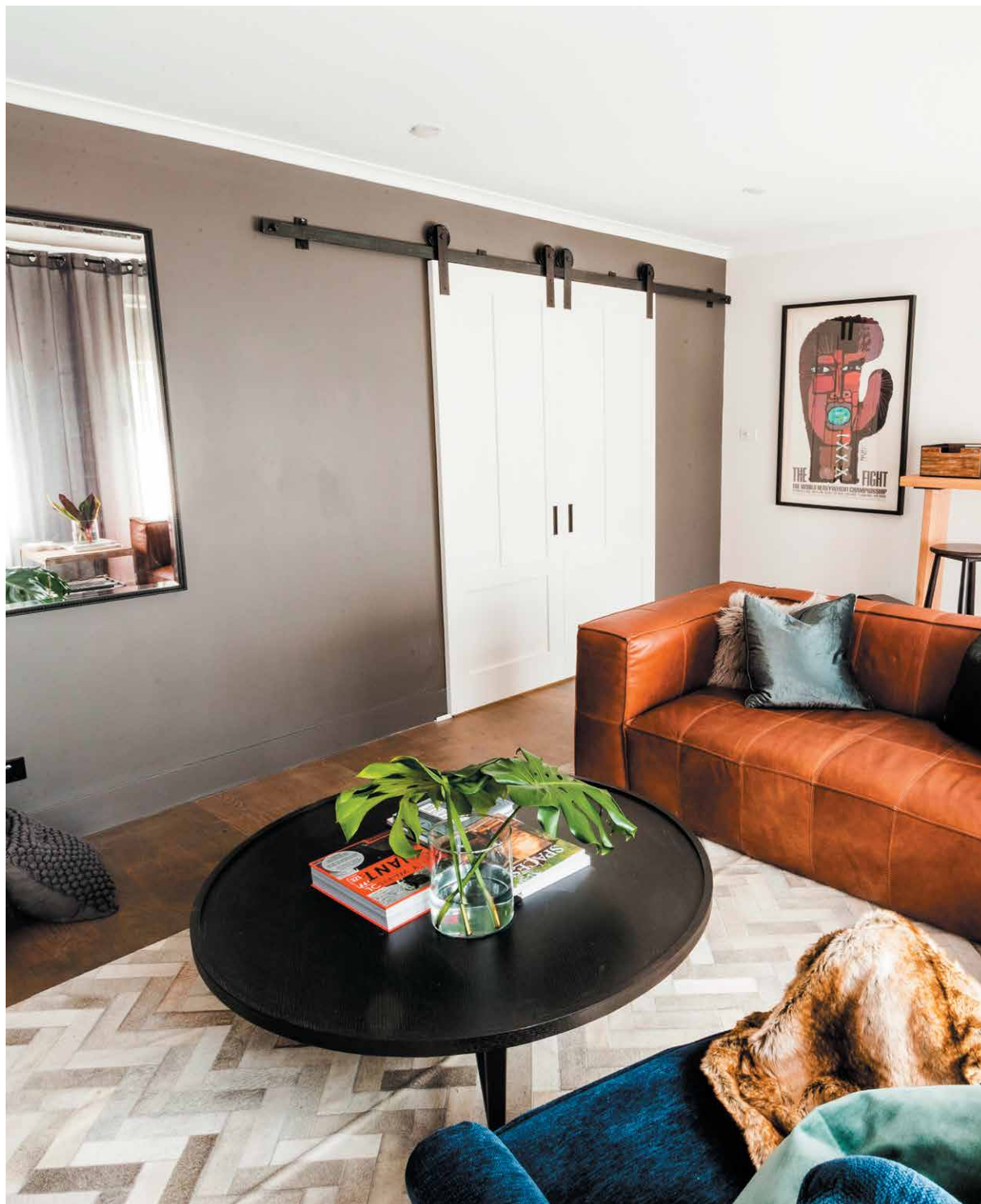
LA QUINTA RUG - AMETHYST





ESPINA RECTANGULAR RUG - GREY. CREDITS JEANNE LAINE





ESPINA RUG - GREY

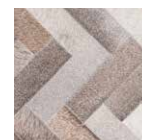
## ESPINA RUG

There's a perfectly good reason why the Espina is one of Art Hide's top sellers. With its generous proportions, beautiful tonal mix of natural tones and opulent textures – what's not for you to adore?

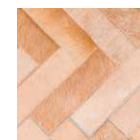
The Espina is all laid-back luxe, effortlessly enhancing all kinds of interiors.



Available in Circular, Rectangle, Runner & all Custom sizes.  
For pricing, please see our Price List at the end of the catalogue.



GREY



CARAMEL





## SWALLOWTAIL RUG

Composed and classical, the Swallowtail is the perfect floor rug for lovers of raw, understated beauty and a sense of timelessness. You'll be creating your personal sanctuary from the ground up with this incredible beauty.



Available in Circular, Rectangle, Runner & all Custom sizes.  
For pricing, please see our Price List at the end of the catalogue.



GREYED JADE



CREAM



CARAMEL



## VAMOS RUG

Art Hide is renowned for its clever pattern work and the Vamos takes natural greys to a whole new level with its striking oversized geometric braided design. The Vamos will give you a neutral floor rug with an incredible twist.



Available in Circular, Rectangle, Runner & all Custom sizes.  
For pricing, please see our Price List at the end of the catalogue.



GREY







CREDIT :CASA BOTEHLO

## INCENDIO RUG

Ever a stylists' favourite, the jaw droppingly-beautiful Incendio by Art Hide is a work of exquisite crafted art, taking two artisans two full days to make. Each piece requires hand cutting and laying into shape prior to stitching into its final, perfect circular shape. Available in greys or brindles; both colours guarantee to effortlessly transform your interior.



Available in Circular & all Custom sizes.

For pricing, please see our Price List at the end of the catalogue.



GREY BRINDLES BROWN BRINDLES



## DIVISION RUG

---

There's just something about this design, as testified by its enduring popularity with Art Hide's loyal customers. The Division brings a feeling of warmth and texture to an interior through its calm and considered palate. Minimal, yet definite in its design, this is a distinguished heritage rug that will always look the part in your home.



Available in Circular, Rectangle, Runner & all Custom sizes.  
For pricing, please see our Price List at the end of the catalogue.





## LLAMTIVO RUG

A small space superstar, the Llamativo packs a punch due to its irregular shape and chunky tiles that make a definite focal point on any floor. Available in a range of colours, you'll be smitten with the Llamativo's high impact versatility.



Available in Standard 1.5 x 1.4m, Circular, Rectangle, Runner & all Custom sizes.  
For pricing, please see our Price List at the end of the catalogue.



GREY MIX



CHAMPAGNE



BLACK & WHITE



CARAMEL



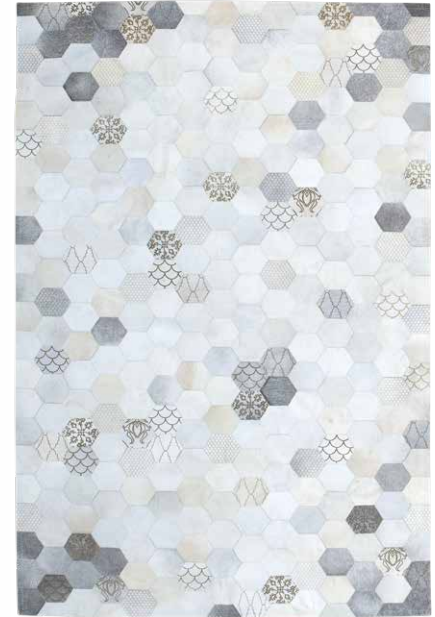






## ATOMO RUG

This high-impact, jaw dropping beauty fashionably displays all of Art hide's signature laser burns has now been adapted in beautiful tones of grey and cream is sure to create a statement and turn heads.



Available in Circular, Rectangle, Runner & all Custom sizes.  
For pricing, please see our Price List at the end of the catalogue.



CREAM

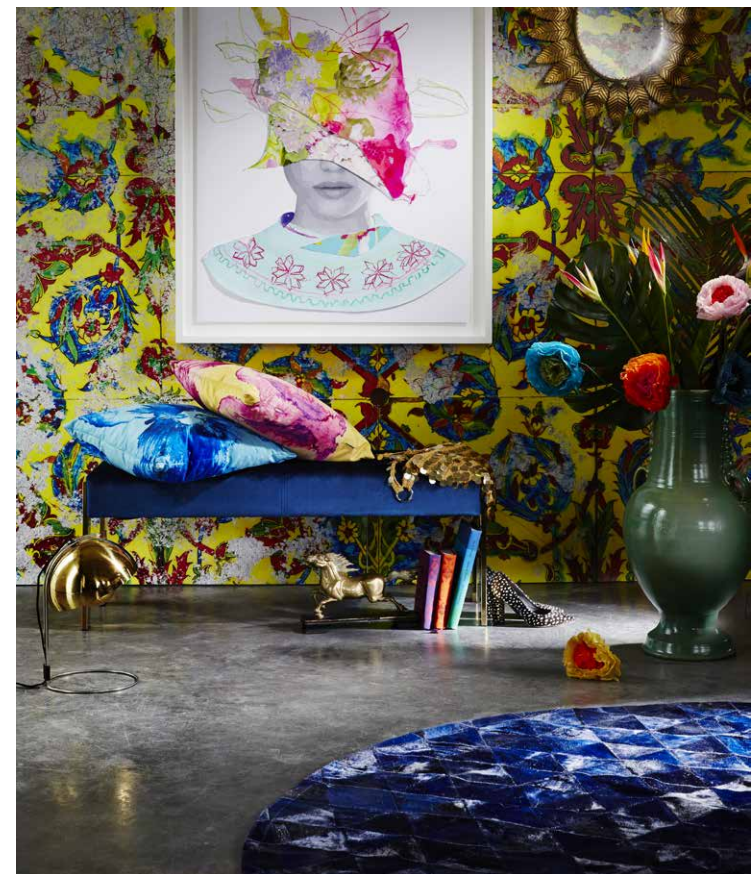


CREAM MIX





TRILOGIA RUG - CHARCOAL



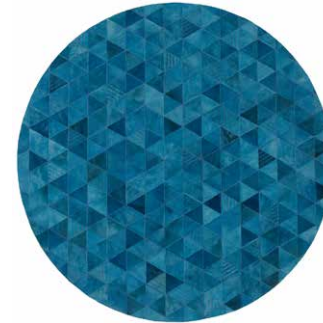
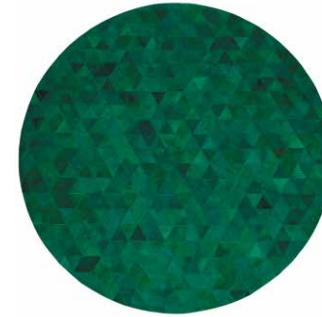
TRILOGIA RUG - MIDNIGHT BLUE





## TRILOGIA RUG

Literally the jewel in the crown, this luscious Trilogia will reinvent and refresh your interior like nothing else. Out of this world and glam on a major scale.

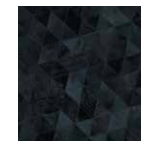


Available in Circular, Rectangle, Runner & all Custom sizes.

For pricing, please see our Price List at the end of the catalogue.



CREAM



CHARCOAL



MIDNIGHT BLUE



EMERALD



TERRACOTTA

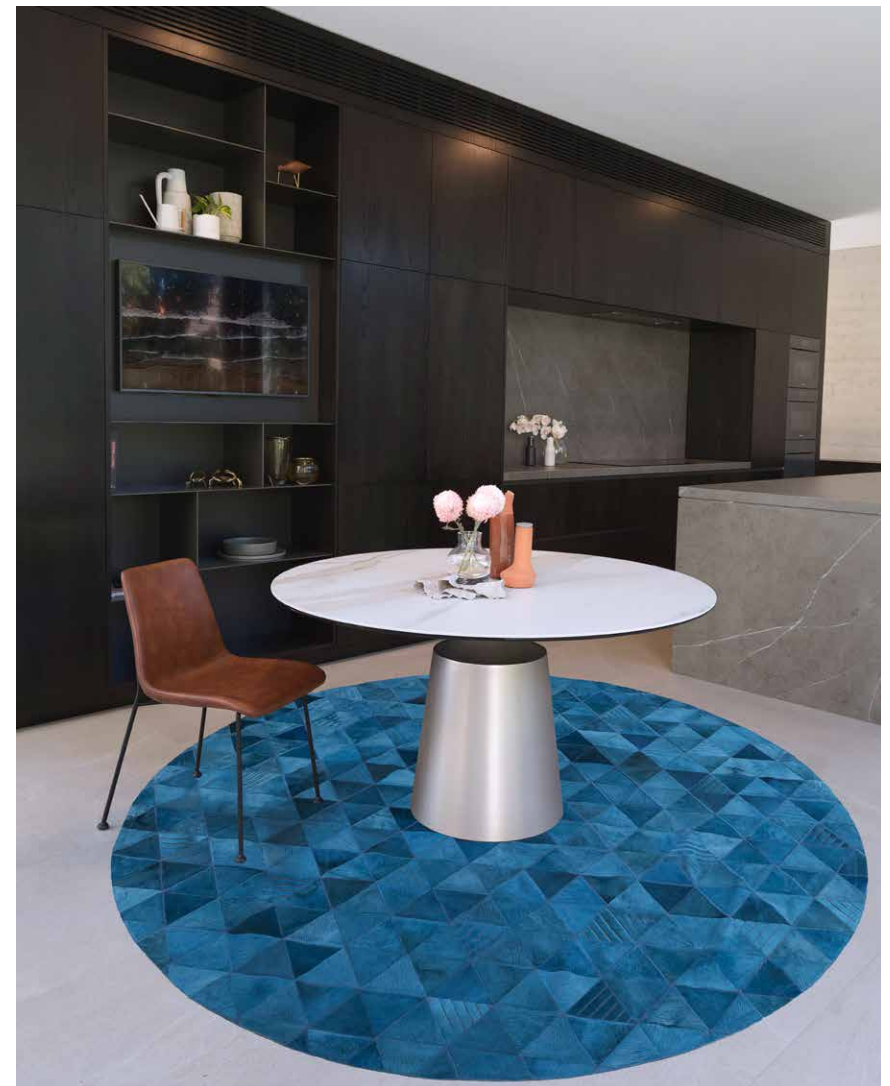


JADE





TRILOGIA RUG - TERRACOTTA



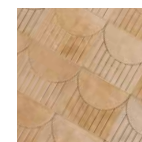
TRILOGIA RUG - DARK JADE



## SOL RUG - BISCOTTI

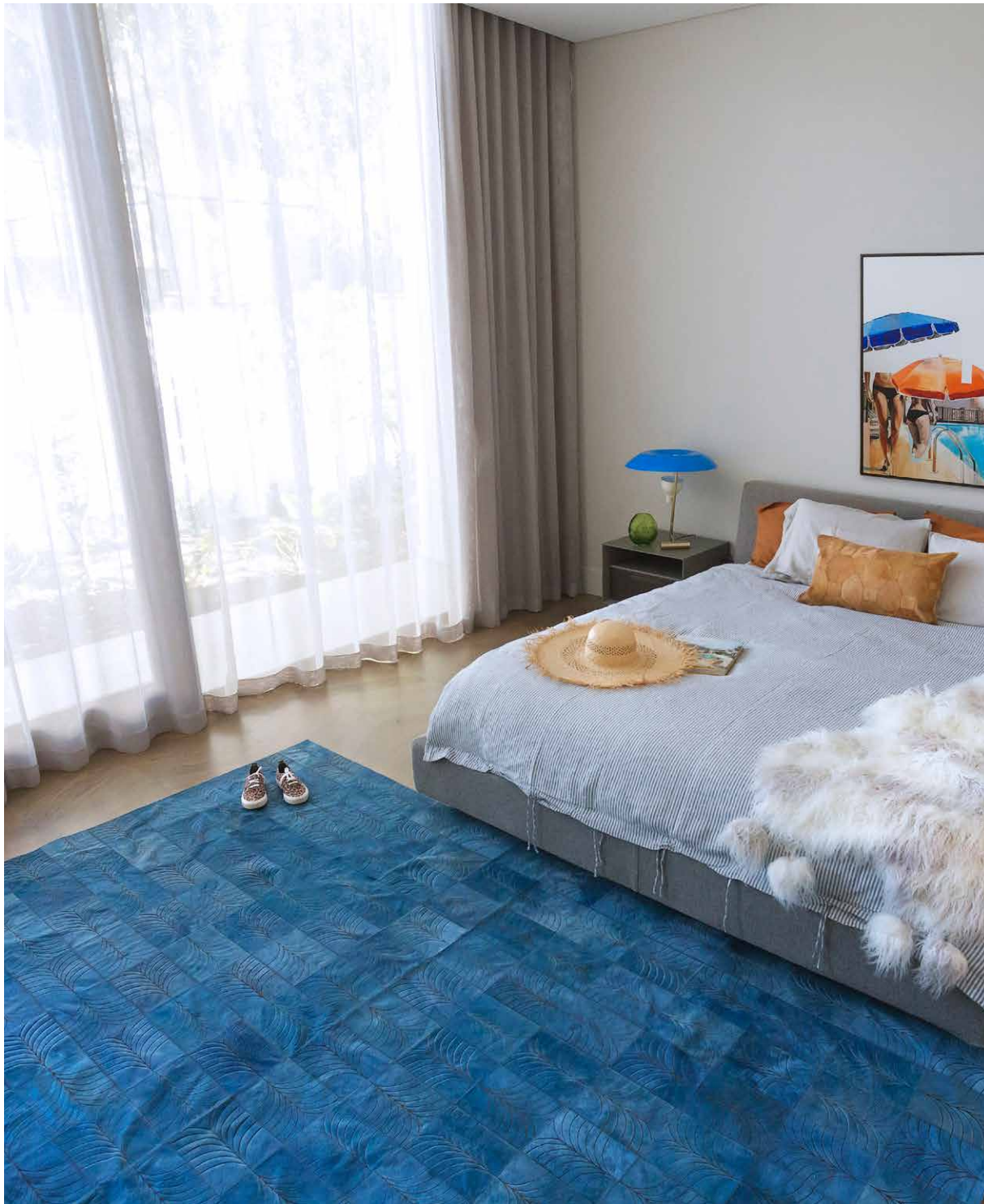
With its minimalist sharp lines and geometric finesse, the alluring Sol takes its cue from the endless sand and sun of the Southern California desert landscape.

The muted colourway interplays with the clean lines of this vintage inspired pattern, created through Art Hide's signature, highly intricate, laser burn hide treatment technique.



BISCOTTI





## LAS PALMAS RUG - DENIM

With elegant vintage curves and a shimmering poolside aesthetic, the stunning Las Palmas rug is a quintessential statement piece where high style meets relaxed luxury. Art Hide's bold new denim colour is the perfect shade for this striking new rug which incorporates Art Hide's signature, highly intricate, laser burn technique.



Available in Circular, Rectangle, Runner & all Custom sizes.  
For pricing, please see our Price List at the end of the catalogue.



DENIM







## SUEÑO RUG

The incredibly elegant Sueno rug is a contemporary take on a traditional Persian rug, but with a twist. The gorgeous woven patterns on the rug are created using a unique tiling technique, along with intricate laser burning and hand painted golden detailing.



Available in Rectangle sizes.

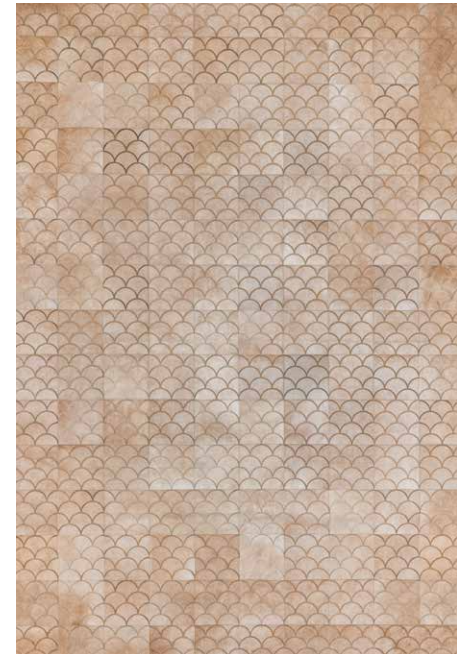
For pricing, please see our Price List at the end of the catalogue.





## LUNETA RUG

The sinuous geometry of Art Hide's luxurious Luneta creates the perfect starting to a room you'll love. Modern, yet relaxed with a cursive repetitive crescent shape, the Luneta offers an ambience that is both luxe and laid back.



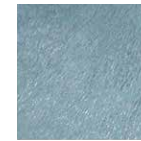
CREAM



MEDIUM CARAMEL



GREY



NILE BLUE



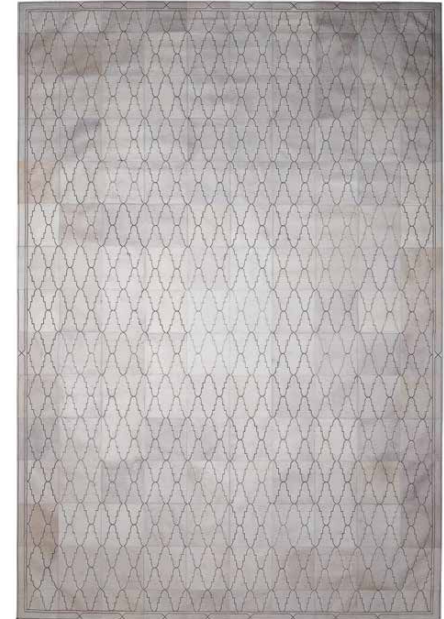
WASABI





## EXOTICO RUG

Elegant and sophisticated, Art Hide's striking Exótico design is inspired by traditional Moroccan tiles. This forever rug will be pride of place in your home.



Available in Circular, Rectangle, Runner & all Custom sizes.  
For pricing, please see our Price List at the end of the catalogue.



CREAM



MEDIUM CARAMEL



GREY



NILE BLUE



WASABI





## FILIGRANO RUG

Art Hide's out-of-this-world Filigrano design guarantees to make your room something spectacular with its graceful curves and beautiful natural contrasts.



Available in Rectangle, Runner & all Custom sizes.

For pricing, please see our Price List at the end of the catalogue.



CREAM



MEDIUM CARAMEL



GREY



NILE BLUE



WASABI









## **ALTA BY ART HIDE**

---

The Alta range combines smaller tiles and tessellation's with pops of colour, in a combination that delivers on style, but at a great price point. The Alta collection is available at trade discount only (no wholesale).





## OLIO RUG

Our stunning new Olio rug is an exciting new development from Art Hide that skilfully blends a mix of grey, light caramel and taupe premium hide with lush grey and beige high-quality viscose.

This beautiful, polished combination showcases and highlights the hide while maintaining a great price point



Available in Circular, Rectangle, Runner & all Custom sizes.  
For pricing, please see our Price List at the end of the catalogue.



GREY



CHARCOAL





DÉDALO RUG





## DÉDALO RUG

This high impact Dédalo rug artfully blends a mix of natural premium cowhide, including intricate laser burned hide panels, with tonally dyed high-quality viscose.

Pops of jet black and finely lasered panels offer stunning visual impact, with a myriad of softer tones pulling together seamlessly these beautiful mixed textiles.



Available in Circular, Rectangle, Runner & all Custom sizes.  
For pricing, please see our Price List at the end of the catalogue.



GREY

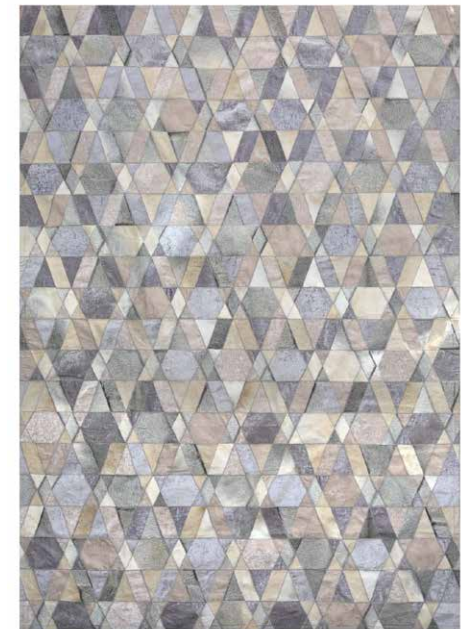




## SELVA RUG

The elegant Selva rug artfully blends a mix of naturally colored premium cowhide with tonally dyed high-quality viscose. Selva's stunning geometric pattern cohesively draws these mixed textiles together into a seamless patchwork of warm and inviting tones.

The durability and quality of the Selva remain the same as the regular Art Hide range, and the injection of the lush viscose not only looks incredibly striking but also creates a fabulous price point.

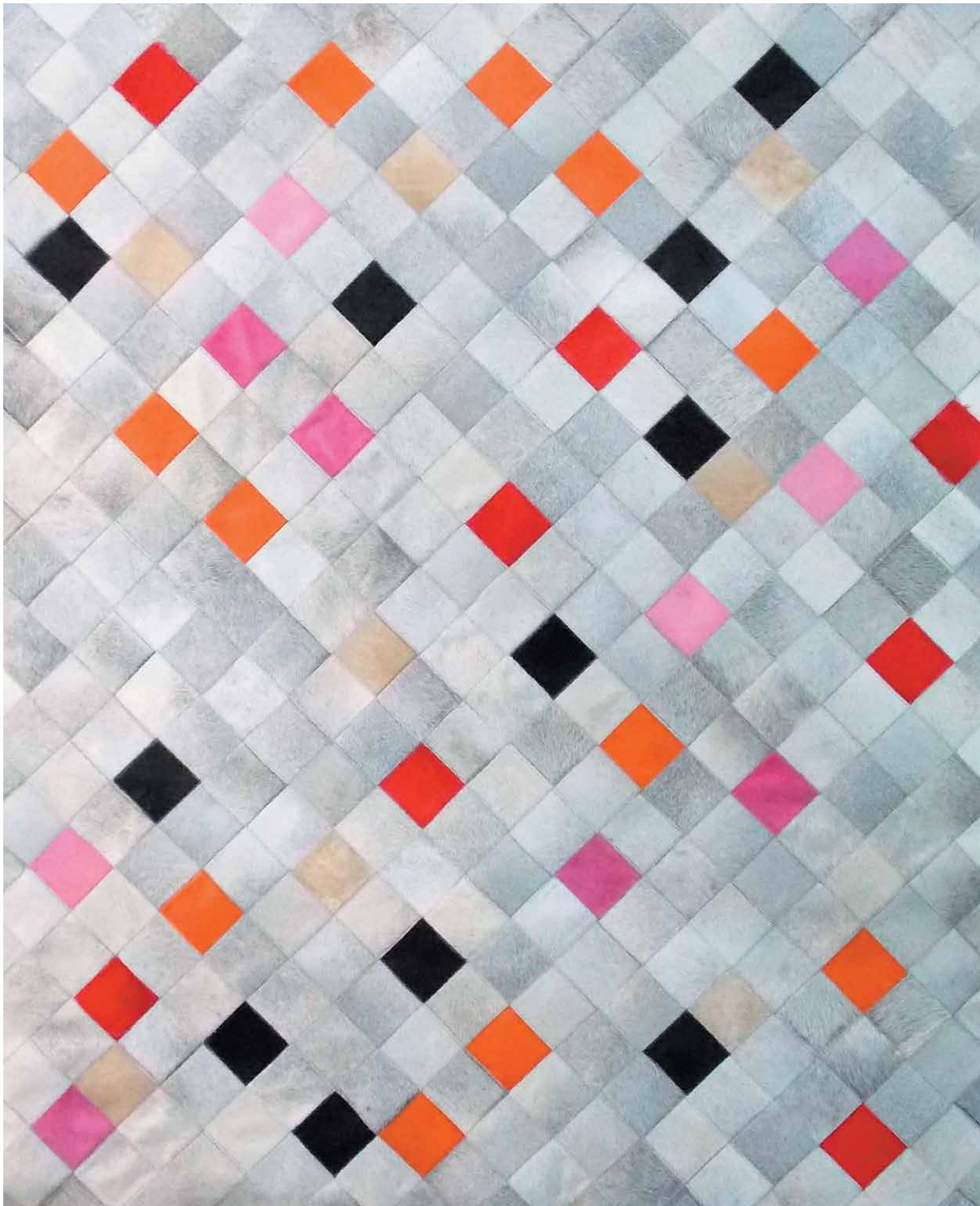


Available in Circular, Rectangle, Runner & all Custom sizes.  
For pricing, please see our Price List at the end of the catalogue.



GREY





FALLING SQUARES - PINK

## FALLING SQUARES RUG

A playful, yet striking new release under our Alta line, the Falling Squares rug will add spades of charisma and sophistication to your interior. The Pink colourway is combined with natural grey shades to create a warm and rich texture on your floor.

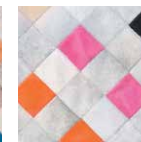
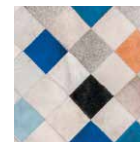


BLUE

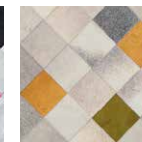


VERDE

Available in Circular, Rectangle, Runner & all Custom sizes.  
For pricing, please see our Price List at the end of the catalogue.



PINK







## TRELLIS RUG

Crammed with colour, this new release under our Alta line will add spades of charisma and sophistication to your interior. Colour is combined with natural grey shades to create a one-of-a-kind look – guaranteed to refresh and revive your interior!



Available in Circular, Rectangle, Runner & all Custom sizes.

For pricing, please see our Price List at the end of the catalogue.



BLUE



PINK



BLACK



CARAMEL





## DE LOS BOSQUES RUG

Complete your luxurious home with the wonderfully soft feel of the exclusive De Los Bosques Hide Rug from Art Hide.



Available in Circular, Rectangle, Runner & all Custom sizes.  
For pricing, please see our Price List at the end of the catalogue.





## EL CIELO RUG

Bring indulgent impact to your living room with the exclusive patchwork design of the El Cielo Hide Rug from Art Hide.



Available in Circular, Rectangle, Runner & all Custom sizes.  
For pricing, please see our Price List at the end of the catalogue.









## LOCO CHEVRON RUG

Don't be fooled by cheap imitations. Our Loco Chevron is beautifully produced with premium quality cowhide and commercial grade nylon thread, and backed with a heavy duty canvas tape on the stitch lines. This beautiful Art Hide rug will last you a lifetime



Available in Circular, Rectangle, Runner & all Custom sizes.  
For pricing, please see our Price List at the end of the catalogue.



GREY



CARAMEL BRINDLE



TIGGERISH BRINDLE





## DALMATA RUG

Fun, new minimalist Scandi inspired rug, the Dalmata, features black and white Argentinian cowhide tiled into a Dalmatian style pattern.



Available in Circular, Rectangle, Runner & all Custom sizes.  
For pricing, please see our Price List at the end of the catalogue.





## GAUCHO RUG

Rustic and raw, the subtle yet stunning design of the Gaucho fades rich, earthy browns into creamy whites.



Available in Circular, Rectangle, Runner & all Custom sizes.  
For pricing, please see our Price List at the end of the catalogue.





## DEGRADE RUG

A striking, stand-out design contrasting deep, shiny black with rich, creamy white for maximum impact.



Available in Circular, Rectangle, Runner & all Custom sizes.  
For pricing, please see our Price List at the end of the catalogue.





## TRANQUILO RUG

Create a classic, peaceful ambience with the beautiful warm tones and natural symmetry of Art Hide's Tranquilo.



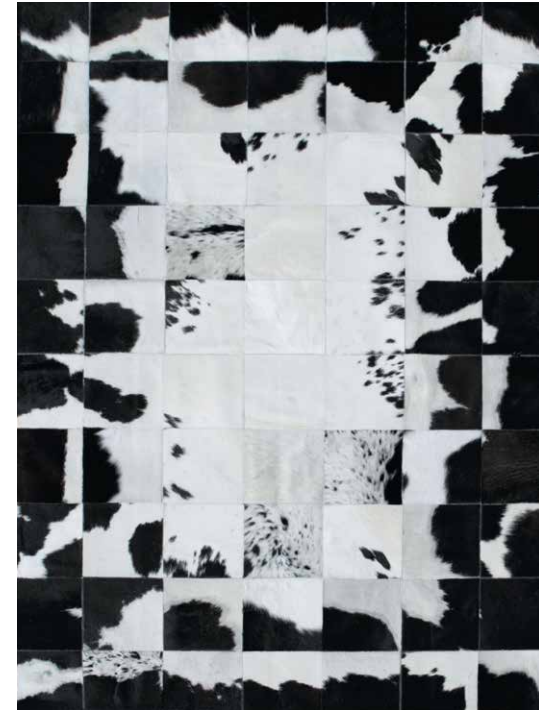
Available in Circular, Rectangle, Runner & all Custom sizes.  
For pricing, please see our Price List at the end of the catalogue.





## ROMPECABEZA RUG

Rustic and raw, the subtle yet stunning design of the Gaucho fades rich, earthy browns into creamy whites.



Available in Circular, Rectangle, Runner & all Custom sizes.  
For pricing, please see our Price List at the end of the catalogue.





## BUENOS AIRES RUG

Reinvent your space with the bold graphic design of Art Hide's Buenos Aires rug that's a twist on the classic monochrome.



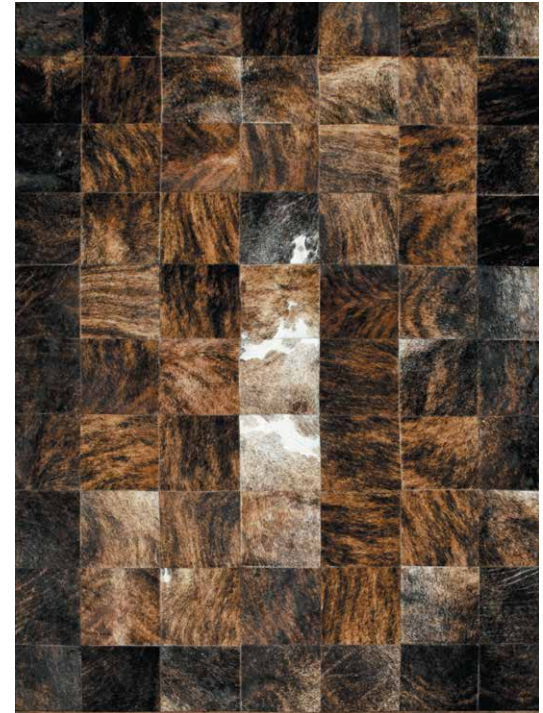
Available in Circular, Rectangle, Runner & all Custom sizes.  
For pricing, please see our Price List at the end of the catalogue.





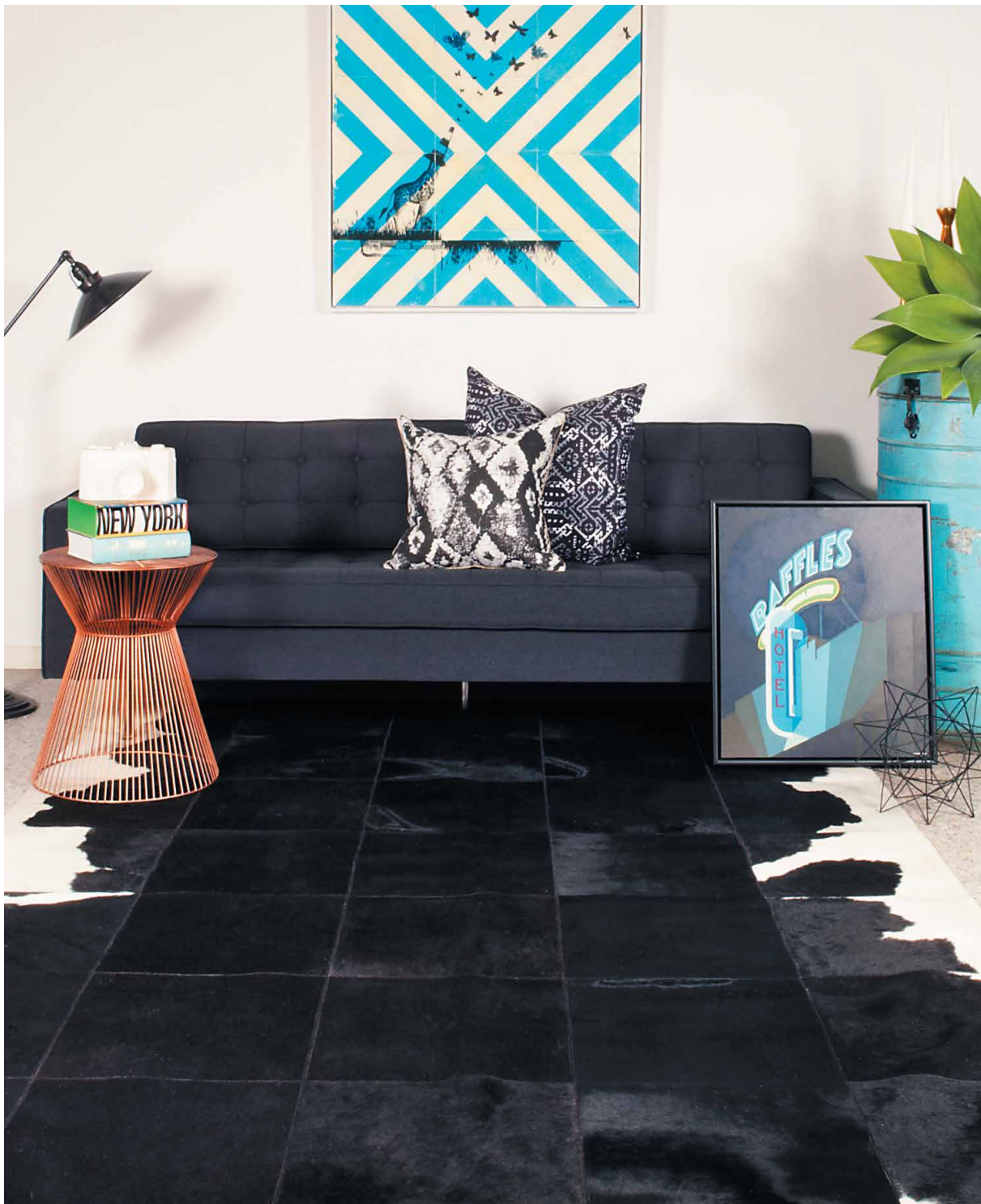
## DESNUDO RUG

Earthy, natural and calming, the Desnudo is a beautiful, versatile design combining rich, textural and warm tones.



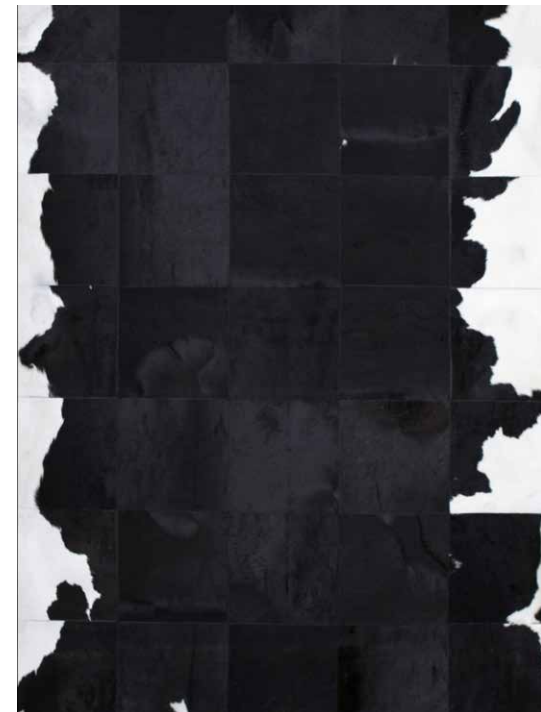
Available in Circular, Rectangle, Runner & all Custom sizes.  
For pricing, please see our Price List at the end of the catalogue.





## EL GORDO RUG

A luxurious statement piece, El Gordo – the fat man – is a stunning design destined to become the focal point in any room.



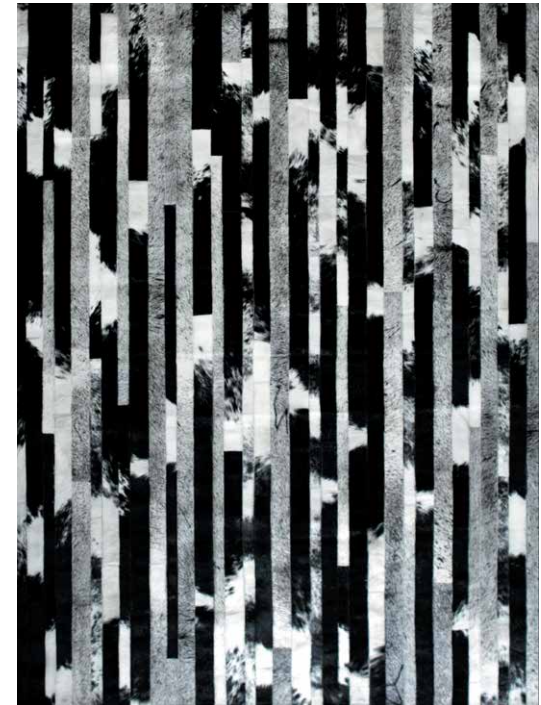
Available in Circular, Rectangle, Runner & all Custom sizes.  
For pricing, please see our Price List at the end of the catalogue.





## COJONUDO RUG

The stunning Cojonudo features an intricate contrasting black, speckled and greys created from premium Argentinian cowhide. It comes in 2 standard sizes.



Available in Circular, Rectangle, Runner & all Custom sizes.  
For pricing, please see our Price List at the end of the catalogue.









ISOLA HIDE - CARAMEL WITH COPPER





## ISOLA HIDE

A stunning alchemy of natural hide combined with ethnic vibes and high impact metallics. This whimsical, boho style is the supreme ultimate in laid-back luxe. The Isola hide is a design collaboration with our sister brand, Amigos de Hoy. Premium quality natural cowhide has been elegantly finished with a metallic devore technique in a batik inspired design. Available in Grey, Cream, Black and Caramel base hides with either gold, silver or copper metallic pattern.



Available in 3m2 & 4m2.

For pricing, please see our Price List at the end of the catalogue.

### GREY BASE



### BLACK BASE



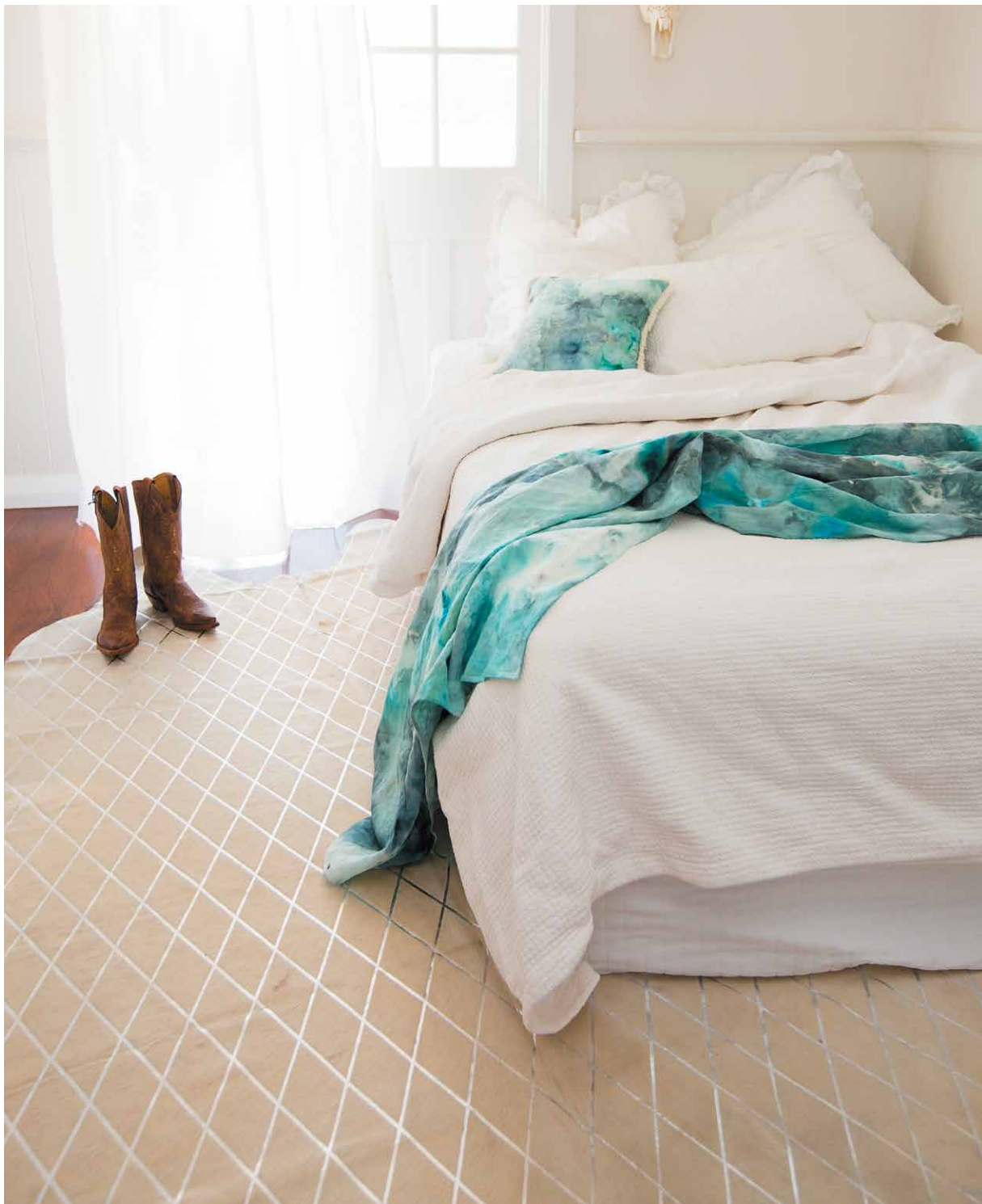
### CREAM BASE



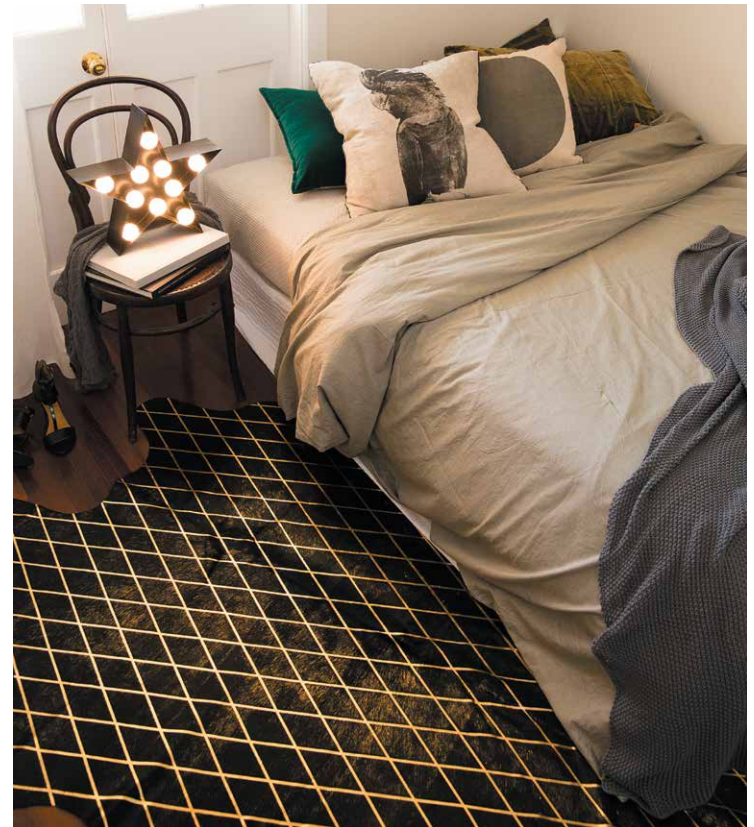
### CARMEL BASE







ARLEQUIN HIDE - CREAM WITH SILVER



ARLEQUIN HIDE - BLACK WITH GOLD





## ARLEQUIN HIDE

The Arlequin hide is a design collaboration with our sister brand, Amigos de Hoy. Premium quality natural cowhide has been elegantly finished with a metallic devore technique in a fine diamond pattern. Available in Grey, Cream, Black and Caramel base hides with either gold, silver or copper metallic pattern.



Available in 3m2 & 4m2.

For pricing, please see our Price List at the end of the catalogue.

### GREY BASE



### BLACK BASE



### CREAM BASE



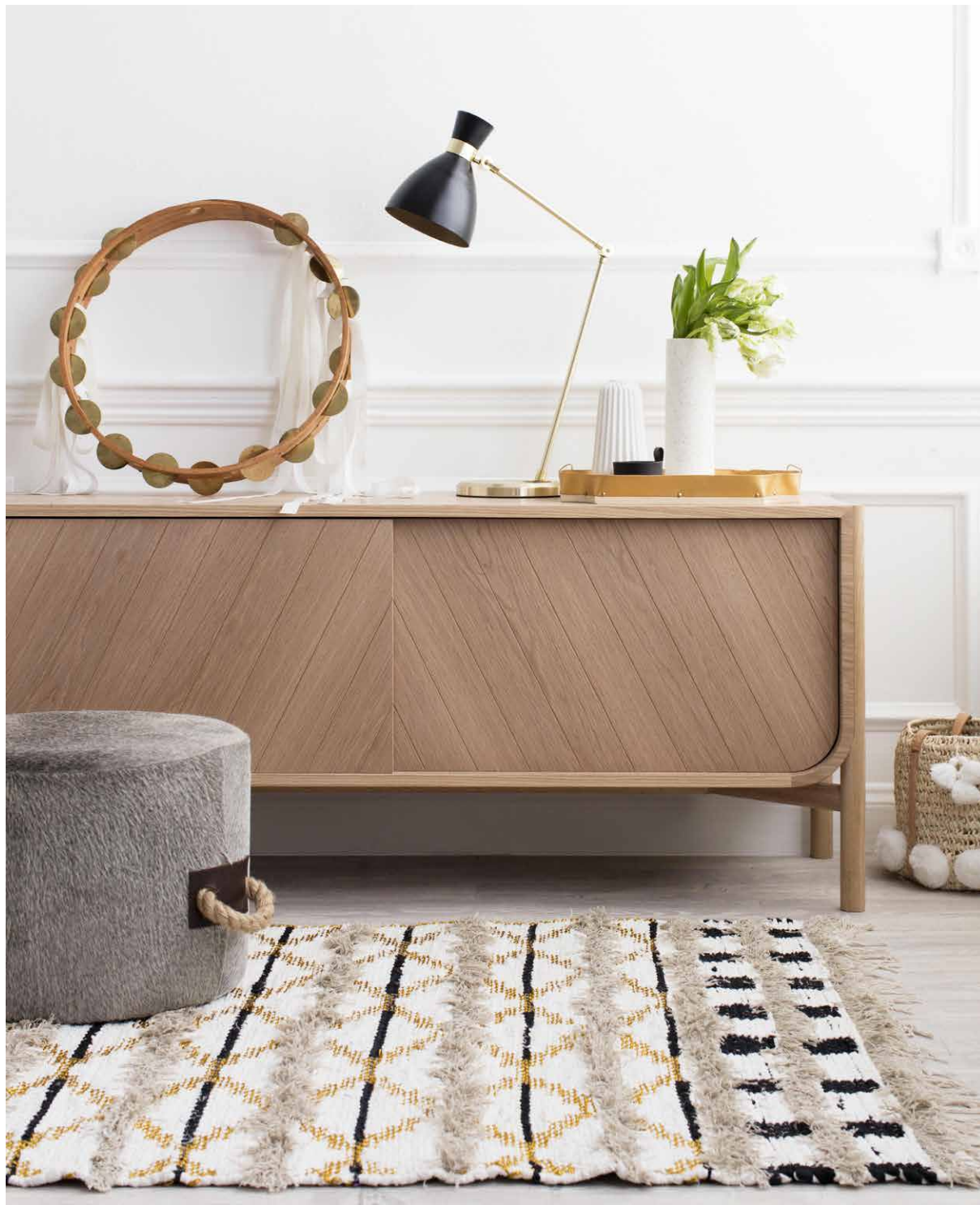
### CARMEL BASE











## ESCAÑO OTTOMAN

Art Hide's new Escaño ottoman with jute handles is a stunning new must-have for any home. Versatile and lightweight, the Escaño makes a fantastic seat, foot stool and/or table.

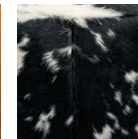
The Escaño comes in three natural cowhide colours and three Cascara hand etched hide colours. Height: 34cm Width: 44cm Weight: 7kg



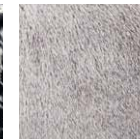
For pricing, please see our Price List at the end of the catalogue.



BROWN



BLACK



GREY

## ESCAÑO ETCHED OTTOMAN



For pricing, please see our Price List at the end of the catalogue.



CREAM



BLACK







## BAGUETTE CUSHIONS





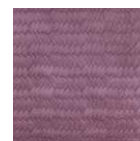


## CESTA BAGUETTE CUSHION

The Cesta Baguette cushion features yet another unique embossing technology to create an exquisite woven effect on premium cowhide, adding to the textural depth of the fabric. This stunning effect is achieved by placing a piece of woven fabric over the hide texture that permanently takes on the woven design. Cushion measures – 65cm x 40 cm. Tonal Suedette backing PET Fill included.



For pricing, please see our Price List at the end of the catalogue.



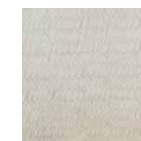
PINK



GREEN



BLUE



CREAM





## ZEUS BAGUETTE CUSHION

Stemming from one of our most coveted and tactile designs, the striking shell-like form of the Zeus laser burn has been adapted to our newest launch, the bolster cushions. Cushion measures – 65cm x 40 cm. Tonal Suedette backing PET Fill included.



For pricing, please see our Price List at the end of the catalogue.



CREAM



GREY



MIDNIGHT BLUE





## HAND ETCHED

Inspired by the traditional Indian handicrafts and embellishments, our hand etched cushions features remarkable traditional motifs design and created by hand-etching the design into the cowhide. These patterns are created by our skilled artisans by using highly specialized knife-etching techniques.

Cushion measures – 50 x 50 cm. Tonal Suedette backing  
PET Fill included.





**IMANI CUSHION**

---



**CAPA CUSHION**

---



**TALLO CUSHION**

---



**CASCARA CUSHION**

---



**FLORIDO CUSHION**

---



For pricing, please see our Price List at the end of the catalogue.



CREAM



BLACK



TRICOLOUR





## TRILOGIA CUSHION

Add another level of drama to your interiors with the Trilogia cushion. Cushion measures 50 x 50cm. Available with Suedette backing. PET Fill included.



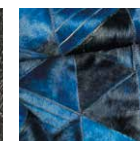
For pricing, please see our Price List at the end of the catalogue.



CREAM



CHARCOAL



MIDNIGHT BLUE



EMERALD





## LASER BURNED CUSHIONS

Stemming from one of our most coveted and tactile designs, the striking shell-like form of the Zeus laser burn has been adapted to our newest launch, the bolster cushions. Cushion measures – 65cm x 40 cm. Tonal Suedette backing. PET Fill included.

For pricing, please see our Price List at the end of the catalogue.



CREAM



WASABI



NILE BLUE



LIGHT CARAMEL



LIGHT GREY



**LUNETA CUSHION**

---



**FILIGRANO CUSHION**

---



**ZEUS CUSHION**

---



**PUNTO LOCO CUSHION**

---



**EXOTICO CUSHION**

---





## TILED CUSHIONS

---

Stemming from our most coveted and tactile designs, our striking tiled cushions are some of our favourites. Tonal Suedette backing. PET Fill included.







## SELVA & OLIO CUSHIONS

The elegant Selva and Olio cushions artfully blends a mix of naturally coloured premium cowhide with tonally dyed high-quality viscose. Each cushion is a masterpiece on its own that is sure to become the show stealer in any interior setting. Tonal Suedette backing. Fill not included.



For pricing, please see our Price List at the end of the catalogue.



OLIO



SELVA



## ANGULO CUSHION



BLUE



GREY



CREAM

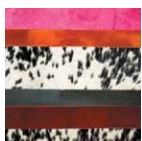


PINK



GREEN

## NUEVA RAYA CUSHION



PINK



VERDE



PEACH



BLUE

## DIVISION CUSHION



## DE LOS BOSQUES AND EL CIELO CUSHIONS



DE LOS BOSQUES



EL CIELO

For pricing, please see our Price List at the end of the catalogue.





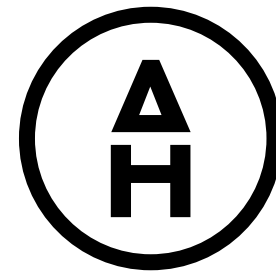
## PRICE LIST

---

VISIT LINK BELOW FOR STANDARD SIZES & CURRENT PRICING

[VIEW HERE](#)





## CONTACTS

---

FOR ORDERS, GENERAL OR MEDIA INQUIRIES :  
[KURA@ARTHIDE.CO](mailto:kura@arthide.co)

+61 458 785 361

+61 2 9086 9399

DIGITAL SHOWROOM

[WWW.AHGCSHOWROOM.COM.AU](http://www.ahgcs showroom.com.au)

**ARTHIDE.CO**